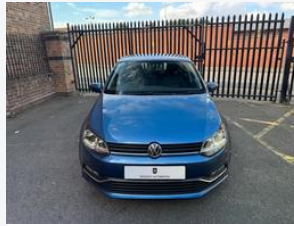


# Volkswagen Polo 1.0 TSI SEL Euro 6 (s/s) 5dr 999 cc

2017 (17 Reg) - 1 Owner-£250 OFF Limited Time!



## £8825

### Vehicle Details

|                 |                      |
|-----------------|----------------------|
| Mileage         | 63,500 miles         |
| Owner(s)        | 1 registered         |
| Transmission    | Manual               |
| Fuel            | Petrol               |
| MOT             | 01/06/2026           |
| Service History | Full service history |

With only one previous owner, this 2017 Volkswagen Polo 1.0L TSI SEL is a smart choice. As a Polo...

### Vehicle Features

|   |  |
|---|--|
| Adaptive Cruise Control                               | Car-Net App-Connect  |
| Carpet Mats - Front and Rear                          | Exterior Badge Deletion - Engine                                 |
| Exterior Badge Deletion - Model and Engine            | Rail Cloth - Titan Black   |
| 16in Alloy Wheels - Rivazza                           | ABS - Anti-lock Braking System with HBA - Hydraulic Brake Assist |
| Air Conditioning - Manual                             | Air Vent Surrounds - Matt Chrome                                 |
| Airbags   | Alarm with Interior Protection                                   |
| Armrest - Front Centre with Storage Compartment       | Automatic Post-Collision Braking System                          |
| Bag Hooks in the Luggage Compartment x2               | Black Radiator Grille with Chrome Trimmed Louvres                |
| Body Coloured Bumpers and Side Sills                  | Body Coloured Door Handles                                       |
| Body-Coloured Door Mirrors with Integrated Indicators | Brake Light Housing in Black                                     |

### Technical Specifications

#### Summary

|                  |          |
|------------------|----------|
| CO2 Emissions    | 103 g/km |
| Vehicle Tax Band |          |
| Engine Size      | 999 cc   |
| Number of Seats  | 5        |

#### Performance & Economy

|                                |           |
|--------------------------------|-----------|
| Fuel Consumption (Urban)       | 52.30 mpg |
| Fuel Consumption (Extra Urban) | 70.60 mpg |
| Fuel Consumption (Combined)    | 62.80 mpg |
| 0-60 mph                       |           |
| Top Speed                      | 122 mph   |
| Engine Power                   | 108 bhp   |
| Number of Valves               | 12        |

#### Dimensions

|                             |              |
|-----------------------------|--------------|
| Height                      | 1453 mm      |
| Length                      | 3972 mm      |
| Width                       | 1901 mm      |
| Fuel Tank Capacity          | 45.00 litres |
| Luggage Capacity (Seats Up) | 280 litres   |

Please Note: Whilst every effort has been made to ensure the accuracy of this used vehicle information and images, some errors may occur. It is important that you do not rely solely on this information or images, but check with your supplying dealer any items that may affect your decision to purchase this vehicle.